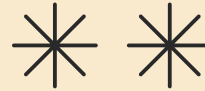


EARTHWORKS

ANNUAL REPORT 2024

BUILDING POWER.
SECURING ACCOUNTABILITY.





Message from Jennifer Krill, Executive Director

As we look back on 2024, Earthworks is energized by the real momentum we've built to protect communities and the environment from the harms of mineral and energy development. With the commitment of our staff, partners, and supporters, we're celebrating this year's progress—and stepping into the work ahead with confidence as we push for a healthier, more just future.

PROGRAM HIGHLIGHTS



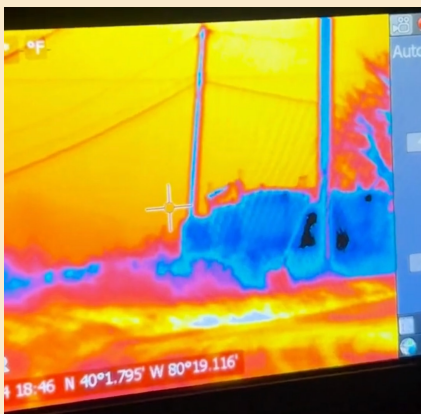
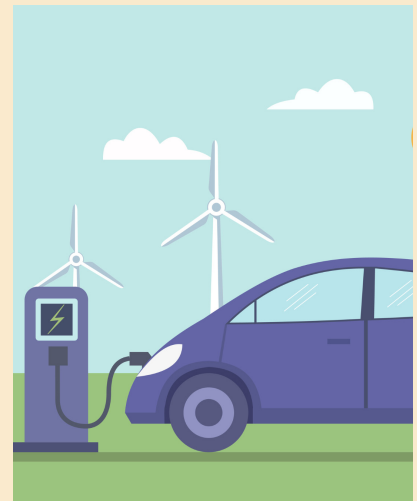
Earthworks stood with Alaskan Tribes and communities to stop the proposed 211-mile Ambler Road, which threatened caribou, salmon, clean water, and local livelihoods near the Gates of the Arctic National Park and Preserve. In April, the Biden administration rejected the permit.

Earthworks also helped shape guidance from the UN Secretary-General's Panel on Critical Energy Transition Minerals. With partners, we advanced two principles reflected in the final recommendations: the clean energy transition must not justify harm across the mineral supply chain, and **Indigenous Peoples' rights—including Free, Prior, and Informed Consent**—must be upheld.

RAISING THE BAR

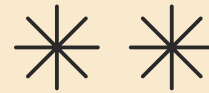
In addition, Earthworks elevated solutions that move the clean energy transition beyond a "cars-only" mindset. While electric vehicles can reduce tailpipe pollution, the mining required for battery minerals can carry significant environmental and community impacts if done irresponsibly. **Earthworks highlighted why a truly clean transportation future must address the full lifecycle of vehicle production—not just emissions at the point of use.**

Through our report, Earthworks showed that practical, proven strategies already exist to reduce the harms associated with electric vehicle production: scaling battery reuse and recycling, promoting smaller vehicles, and investing in public transit. **The path forward is clear—we have the tools and technology needed; what's required now is the will to implement them.**



ADVANCING HEALTH PROTECTIONS

The Protective Buffer Coalition advanced its campaign to protect public health in Pennsylvania. After extensive delays, the Commonwealth's Environmental Quality Board **voted in December to accept a rulemaking petition to expand protective buffer distances between oil and gas development and homes, schools, water sources, and streams.** The Pennsylvania Department of Environmental Protection (PADEP) will now review the petition and the supporting health studies and recommend to the EQB whether to advance or reject the proposal.



IMPACT STORIES

Earthworks and the Environmental Investigation Agency (EIA) used optical gas imaging to investigate methane pollution in a major oil and gas region of Colombia. **The findings informed Crude Lies and a BBC documentary**, raising concerns that Ecopetrol's unaddressed methane emissions could jeopardize Colombia's climate leadership—especially as the country prepares to host the first Global Conference on Fossil Fuel Phase-Out in April 2026.

Frontline leaders from the Gulf Coast and the Permian Basin are celebrating a major victory after the Department of Energy announced it will pause decisions on new LNG export terminal applications. The move follows years of direct actions, petition drives, and sustained pressure on federal decision-makers to fully account for impacts on climate, frontline communities, and national security—and **reflects growing recognition that unchecked fossil fuel expansion threatens public health and our future.**





WHAT IS METHANE?

Methane, the main component in "natural gas", is a super potent greenhouse gas responsible for nearly **one-third** of global warming.

For decades, the oil and gas industry has dumped methane — along with other toxic gases — **freely into the air.**

C

Earthworks partnered with Gas Leaks to relaunch **BigGasPolluters.org**, a watchdog resource that counters oil and gas industry misinformation on methane pollution. **At a moment when credible science and public data face increasing pressure, the site helps reporters, policymakers, and advocates verify claims and track real-world impacts.** The platform includes a database of reported methane emissions, company commitments, documented leakage events, and profiles of the 100 largest oil and gas companies in the United States.

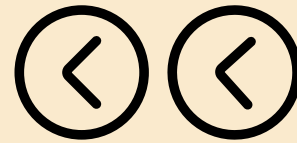
DEFENDING SACRED LANDS AND CLEAN WATER



Earthworks joined the Fort Yuma Quechan Tribe and allies in celebrating the rejection of SMP Gold's proposed Oro Cruz exploration project. The plan would have disturbed more than 20 acres of desert habitat, built miles of roads, drilled dozens of deep holes, and consumed thousands of gallons of water daily—while irreparably damaging a sacred cultural landscape near the Colorado River. In 2025, the Tribe also signed a co-stewardship agreement with the Bureau of Land Management to protect the Quechan Ancestral Landscapes.

In Idaho, Earthworks and local partners challenged a state clean water permit for a proposed open-pit gold and antimony mine near the headwaters of the Salmon River. The mine threatens clean water and public health, imperils wildlife, risks violating Indigenous treaty rights, and would permanently scar thousands of acres of public land.

FINANCIALS



2024

Earthworks is committed to responsible financial stewardship. Additionally, we hold top ratings from Charity Navigator and Charity Watch and meet BBB Wise Giving Alliance standards for governance, transparency, and fundraising integrity.

INCOME

Foundation and Organization Grants	\$8,039,245
Individual Contributions	\$1,152,459
Other	\$413,207
<hr/>	
Total Income	\$9,604,911
<hr/>	
Year End Net Assets	\$10,296,942

RATINGS AND ALLIANCES



EXPENSES

Programs

Energy	\$3,466,026
Mining	\$2,295,725
General	\$1,454,232

Subtotal	\$7,215,983
-----------------	--------------------

Core Mission Support

Fundraising	\$796,644
Management, Finance, and Administration	\$1,179,085

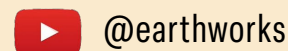
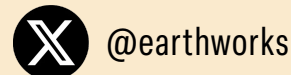
Subtotal	\$1,975,729
-----------------	--------------------

Total Expenses	\$9,191,712
-----------------------	--------------------

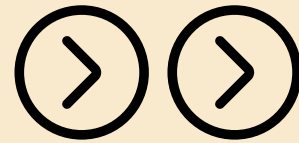
Combined Federal Campaign/Earthshare membership (41290).

EARTHWORKS

1612 K ST., NW, Suite 904
 Washington, D.C., 20006
 1-202-887-1872
 info@earthworks.org • earthworks.org
 EIN/Tax ID: #52-1557765



PEOPLE-POWERED



2024

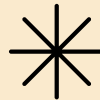
COMMUNITY-LED



Earthworks is powered by people—by frontline leaders, Tribal members, workers, and families who are standing up for their land, water, and health. We work shoulder to shoulder with communities directly impacted by mining, drilling, and other harmful extraction, ensuring their voices shape the fight for change.

Together, we challenge polluters and the systems that protect them, while advancing bold policy solutions that hold corporations accountable and safeguard communities' rights to clean air, clean water, and a safe climate. Our strength comes from connection, trust, and shared purpose—and each year, that collective power grows stronger, more resilient, and more hopeful.

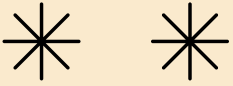
A BIG THANK YOU TO ALL EARTHWORKS' SUPPORTERS



\$10,000+ DONORS

- Anonymous (8)
- 11th Hour Project/The Schmidt Family Foundation
- 2030 Fund, an advised fund of Silicon Valley Community Foundation
- Bamboo Fund of the Community Foundation of Boulder County
- Benevity Community Impact Fund
- Beyond Petrochemicals, a project of Resources Legacy Fund, made possible by support from Bloomberg Philanthropies
- Chicago Community Foundation
- ClimateWorks Foundation
- Cornelia Fund of the Pittsburgh Foundation
- Cross Charitable Foundation
- Crow Creek Conservation Alliance
- Cultural Survival
- DAFGiving360
- Denver Foundation
- EcoTrust
- Environmental Defense Fund
- Erol Foundation
- Fidelity Charitable
- Fire Monkey Fund at Rudolf Steiner Foundation Social Finance
- Fred and Maxine Rumack Foundation
- Global Greengrants Fund
- High Stakes Foundation
- Impact Assets
- John D. and Catherine T. MacArthur Foundation
- Kay Family Foundation
- Leaves of Grass Fund

- Louisiana Against False Solutions
- Maine Community Foundation
- Mancheski Foundation
- Mighty Arrow Family Foundation
- Moon Song Fund at Impact Assets
- Mosaic, a project of The Tides Center
- Naiades Fund at Impact Assets
- National Philanthropic Trust
- Park Foundation
- Pisces Foundation
- Renaissance Charitable Foundation (Ren)
- Robert and Dee Leggett Foundation
- RSF Social Finance
- Sacharuna Foundation
- Sage Fund of the Albuquerque Community Foundation
- Scherman Foundation
- Scoob Trust Foundation
- Steven C. Leuthold Family Foundation
- The Bamboo Fund of the Community Foundation of Boulder County
- The Chicago Community Foundation
- The Cross Charitable Foundation
- The Curtis and Edith Munson Foundation
- The Fine & Greenwald Foundation, Inc.
- The JPB Foundation
- The New-Land Foundation, Inc.
- The Overbrook Foundation
- The Sigrid Rausing Trust
- The William Mooz Living Trust
- Tortuga Charitable Foundation
- True North Foundation
- Underdog Fund of the Common Counsel Foundation
- Waverley Street Foundation
- Weitzman Family 2016 Trust
- William C. Bullitt Foundation
- Windward Fund



WE ARE EARTHWORKS



OUR MISSION

Earthworks defends communities and nature from the harmful effects of mineral and energy extraction while advancing sustainable alternatives. We're guided by our pledge to partner with frontline communities, apply science creatively, and grow people power so we can deliver a fairer, healthier, more livable future today and tomorrow.

Earthworks stands for clean air, water, and land, healthy neighborhoods, and corporate responsibility. We advance solutions that safeguard the Earth's shared resources, our climate, and our communities.

THE LEADERSHIP TEAM

- Jennifer Krill, Executive Director
- Michelle Medeiros, Deputy Executive Director
- Lezlie Griffin, Director of Talent & Equity
- Lauren Pagel, Policy Director
- Lorraine Osinski, Finance & Operations Director
- Camila Ruiz Gallardo, Communications Director
- Rachel Kerr, Energy Program Director
- Payal Sampat, Mining Program Director
- Ann Corbett, Philanthropy Director

BOARD OF DIRECTORS



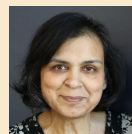
Karolo Aparicio
Vice Chair



Jennifer Krill
Executive Director



Mark Squillace J.D.
Board Secretary



Ranjana Bhandari



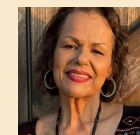
Gene Collins



Patricia Weber
Chair



Robin Broad, Ph.D.



JoKay Dowell



Wilma Subra



Casey Camp-Horinek



Vrinda Manglik



Kenneth Colburn
Treasurer



Laura Martin