

Metal mining companies dump

# 220 Million Tonnes

of toxic mine waste into water bodies every year

## WHY MINE WASTE IS TOXIC

Naturally occurring elements in crushed rock become toxic when exposed during mining:

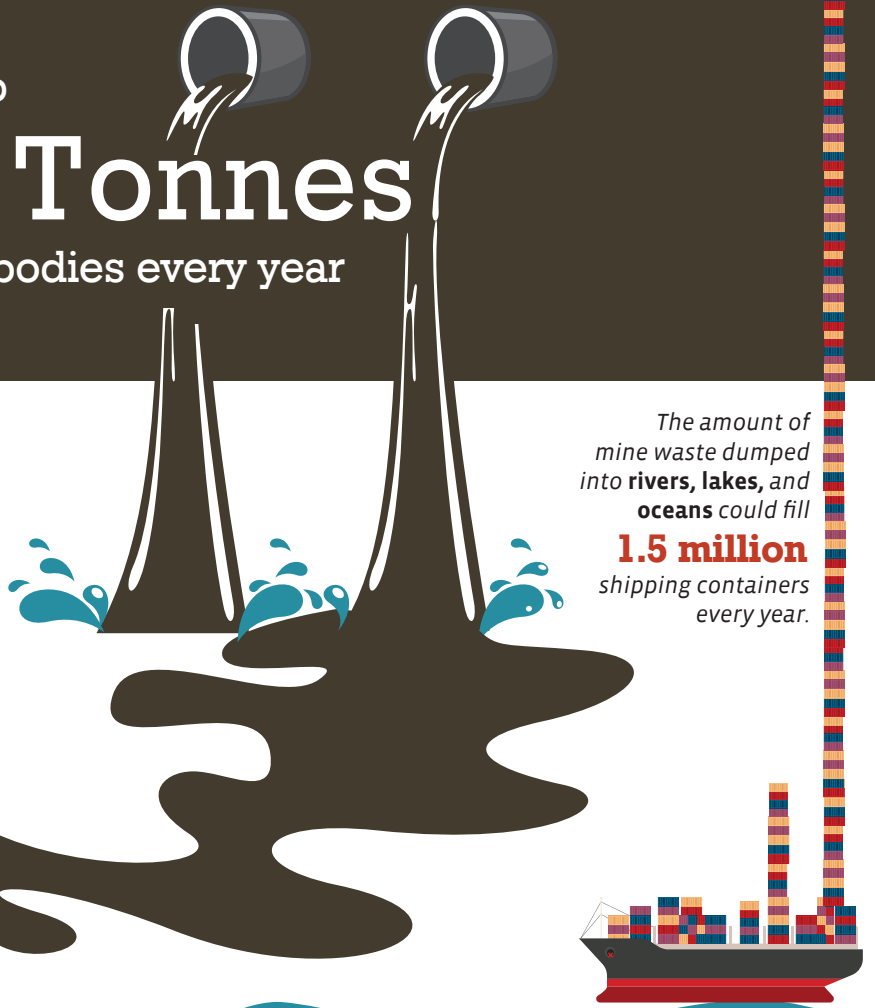
arsenic  
lead  
mercury



Harmful additives are used in processing:

petroleum byproducts  
sulfuric acid  
cyanide

The amount of mine waste dumped into rivers, lakes, and oceans could fill **1.5 million** shipping containers every year.



## WHAT'S AT STAKE

It's cheap for companies to dump waste into oceans, rivers, and lakes but the human and environmental costs are high.



**Marine life:** Mine waste contains heavy metals and milling chemicals that kill marine life and smother fragile ecosystems on the ocean floor.



**Rivers, wetlands, and forests:** Rivers clogged with mine waste change course, flooding vast areas of wetlands and forests with polluted water.



**Human health:** Harmful metals and chemicals increase in concentration as they travel up the food chain.



**Livestock:** Contamination can spread from rivers to floodplains and affect grazing livestock.



**Drinking water:** Mine waste originally dumped into rivers has contaminated home drinking water.

## 7 HOT SPOTS FOR TAILINGS DUMPING

**Alaska**

Lower Slate Lake  
Frying Pan Lake

**Canadian lakes**

**Norwegian fjords**

**Turkey**

Black Sea

**Indonesia**

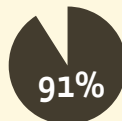
Senunu Bay  
Otomina and Ajkwa rivers

**Papua New Guinea**

Luise Harbor  
Pigput Bay  
Fly River  
Auga River  
Basamuk Bay

## WHO DUMPS INTO NATURAL WATER BODIES?

Barrick Gold (Canada)  
Freeport McMoRan (USA)  
First Quantum Minerals (Canada)  
Highlands Pacific (Australia)  
Newcrest Mining (Australia)  
St Barbara Limited (Australia)  
Ok Tedi Mining Ltd (Papua New Guinea)  
PT Amman Mineral Nusa Tenggara (Indonesia)  
Coeur Mining (USA)  
Goldcorp (Canada)



**Four projects** account for 91 percent of the waste dumped into water bodies each year:

1. Freeport McMoRan's Grasberg mine in West Papua, Indonesia
2. Ok Tedi Mining Ltd.'s Ok Tedi mine in Papua New Guinea
3. PT Amman Mineral Nusa Tenggara's Batu Hijau mine in Indonesia (formerly owned by Newmont Mining)
4. Newcrest Mining's Lihir mine in Papua New Guinea



EARTHWORKS

Earthworks.org

2018



Source: earthworks.org/campaigns/ditch-ocean-dumping