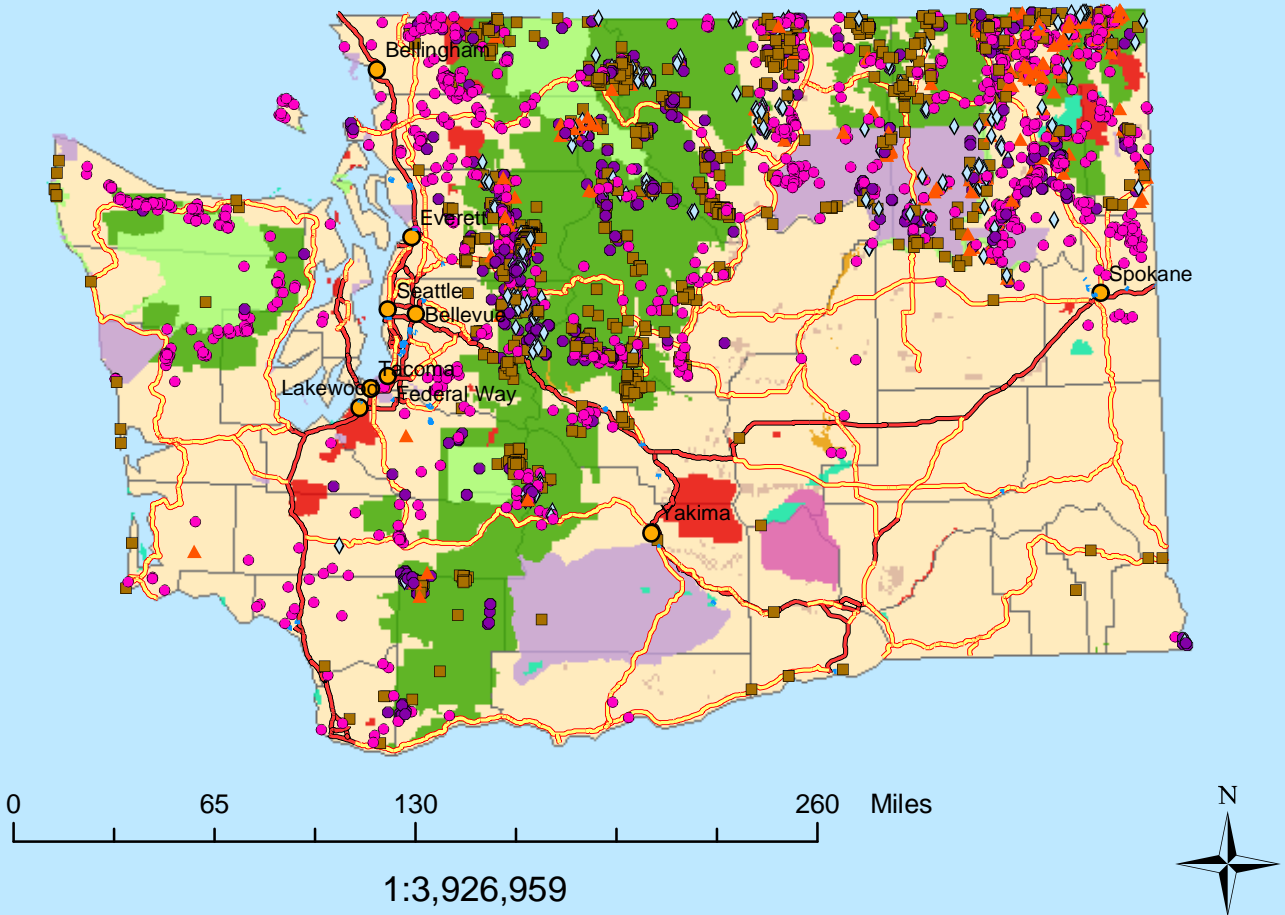


Abandoned Hardrock Mines

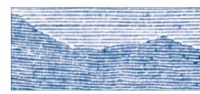
WASHINGTON



Legend

- | | |
|---------------------------------|--------------------------------------|
| ● Cities | Federal Lands |
| Abandoned Hardrock Mines | ■ Bureau of Indian Affairs |
| ● All Others | ■ Bureau of Land Management |
| ● Copper | ■ Bureau of Reclamation |
| ■ Gold | ■ Department of Defense |
| ▲ Lead | ■ Forest Service |
| ◇ Silver | ■ Fish and Wildlife Service |
| Road Classification | ■ National Park Service |
| — Limited Access Highway | ■ Other Agencies (NASA, DOE, DOT...) |
| — Highway | ■ Counties |

Impaired Water Segments and Impaired Water Areas data obtained from U.S. EPA Office of Water. Abandoned Hardrock Mines data obtained from U.S. Geological Survey's MASMILS database 2002 beta copy. All other layers obtained from ESRI.



**MINERAL
POLICY
CENTER**

A Project of the
Mineral Policy Center
Map by Ali Steimke
May 2002